

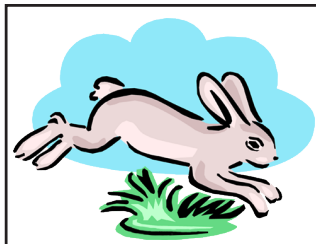


**IntelliVision**<sup>®</sup> Intelligent Television

# HOTEL BUNNY

CARTRIDGE INSTRUCTIONS  
(FOR 1 PLAYER)

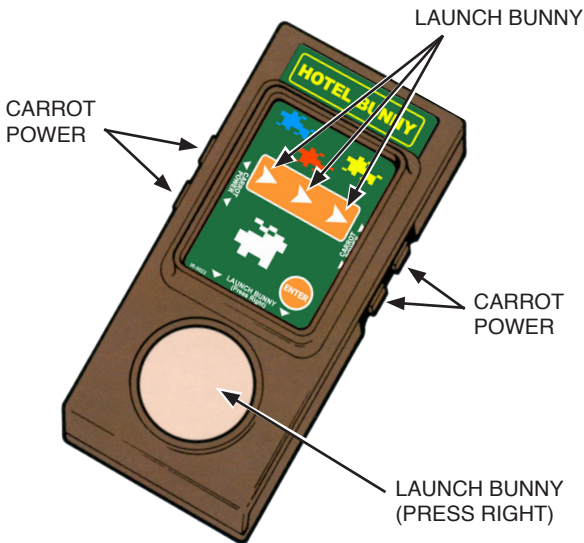
**FOR COLOR TV VIEWING ONLY**

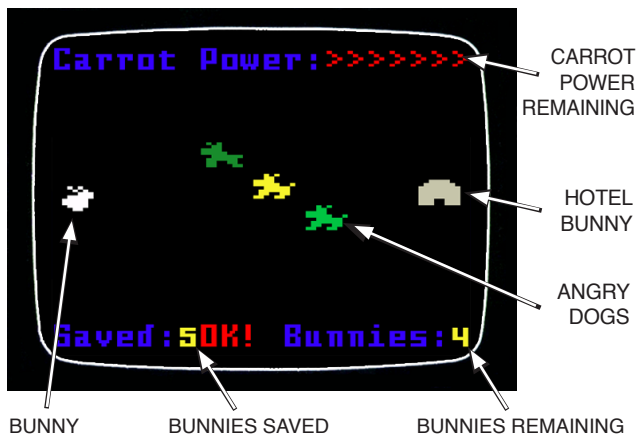


Bunnies must get past packs of angry dogs to arrive safely at Hotel Bunny. Keep your eyes on the prize and make a mad dash at the safest time. Will you be able to help them?

## GET READY!

Slide the HOTEL BUNNY overlays into the Hand Controller frames. Insert the game firmly in the Intellivision console cartridge slot. Press any button to start the game.





## GAMEPLAY

You start with 9 bunnies on each of the 10 levels. To advance to the next level, you must safely guide at least 5 of them to their hotel. Press the right side of the Disc to launch bunny towards the hotel.

Use your Carrot Power to gain temporary invincibility. But use it sparingly! You start with only 7 carrots, and they are not replenished until the start of the next level.

Tap any side Action Button for a carefully timed burst of Carrot Power. Hold down any Action Button for a longer burst of Carrot Power in those tougher spots.

**SMART BUNNY TIP:** Be sure to watch the patterns of the angry dogs before launching a bunny. The levels get increasingly harder as you progress through the game!



# **INTELLiVISION REVOLUTION**

This Revolution Will Be Intellivised

Game Programmed by Sebastian Mihai.

Manual by Mark Thompson. Special thanks to Pboland, Harvey DeKleine, Christian Martin, Reinhard Traunmeller, Mark Oberhauser, Jonathan Hershberger, Jordan Hershberger, Don Switzer, Eddie Cingoranelli, Brad Dillon.

IR-0022